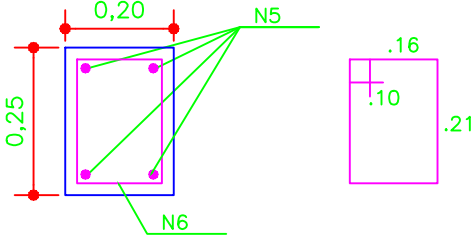
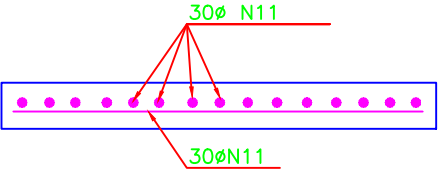
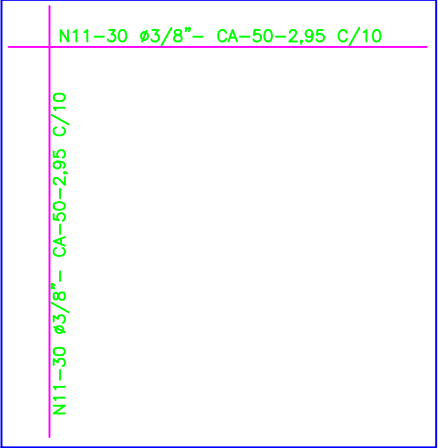
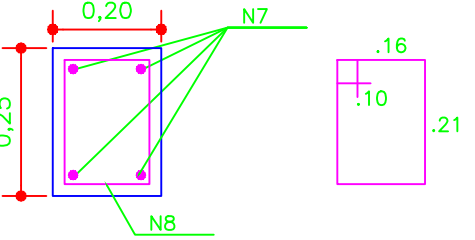


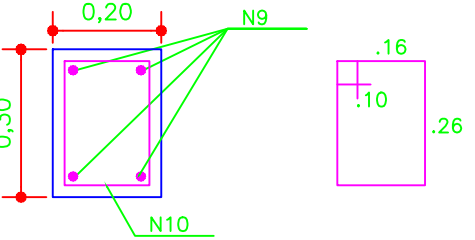
LAJE EM CONCRETO ARMADO
BASE DA CAIXA D'ÁGUA



N5-4Ø3/8"CA50-2.95(x4)
N6-18Ø4.2"CA60-0.84 C/15(x4)
VIGAS (V1,V2,V3,V4)



N7-4Ø3/8"CA50-2.95(x4)
N8-18Ø4.2"CA60-0.84 C/15(x4)
VIGAS (V5,V6,V7,V8)



N9-5Ø3/8"CA50-2.95(x4)
N10-18Ø4.2"CA60-0.84 C/15(x4)
VIGAS (V9,V10,V11,V12)

SISTEMA DE ABASTECIMENTO DE AGUA		
PROJETO:	DETALHE DA TORRE DE SUSTENTAÇÃO DO RESERVATÓRIO	
TITULO:	DETALHE (LAJES E VIGAS)	
PREFEITURA MUNICIPAL DE PENALVA-MA		DATA:
LOCALIDADE:	ESCALA: S/ESC	